

Finance/Investments

William van Niekerk, CSR Director



25 April 2014

Koninklijke BAM Groep nv | RSM Sustainability Forum 2014 | Mainstreaming Sustainable Business

Our goal

Sustainability

Our BAM brand

Reputation

Our projects and offices

License to operate

Our employees

Moral obligation

Processes

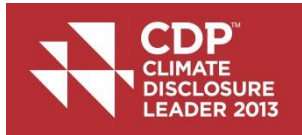
Projects

Presentation

How we
contribute

How our
projects
contribute

How we show
our commitment



Transparantiebenchmark 2013
De Kristal 2013

grand average

1. Royal Philips
- 2. Royal BAM Group**
- Heineken
- ING Group
5. GDF Suez
- Hitachi
- Royal KPN
8. Akzo Nobel
9. Reed Elsevier Group
10. Royal Dutch Shell

1. Royal Philips
2. Reed Elsevier Group
3. Heineken
- 4. Royal BAM Group**
- DSM
6. ArcelorMittal
7. Unilever
- KPN
9. AkzoNobel
- Ahold

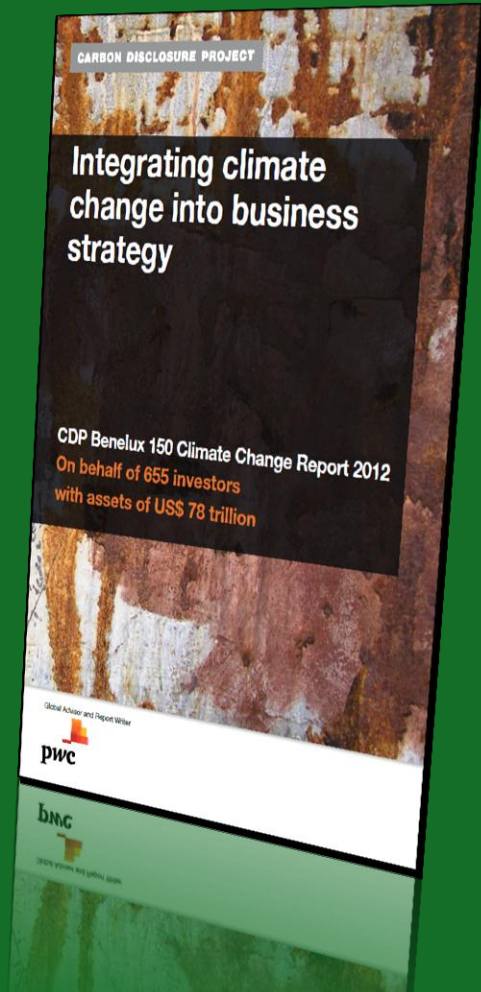
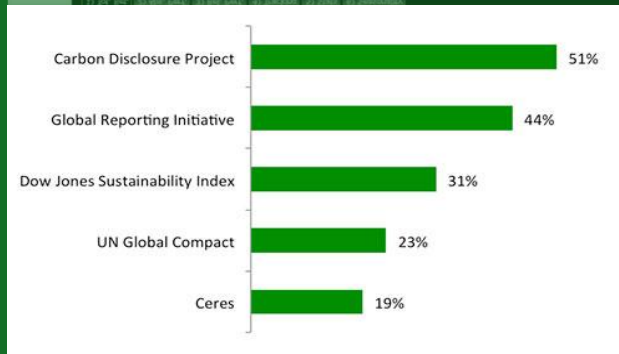
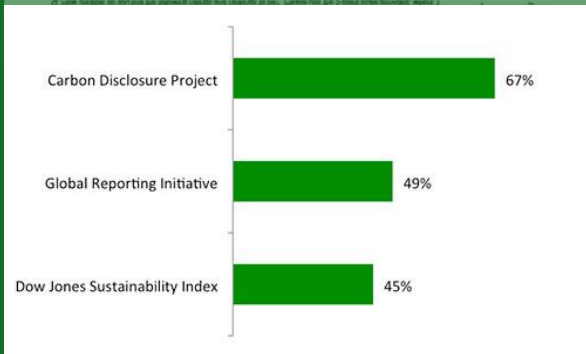
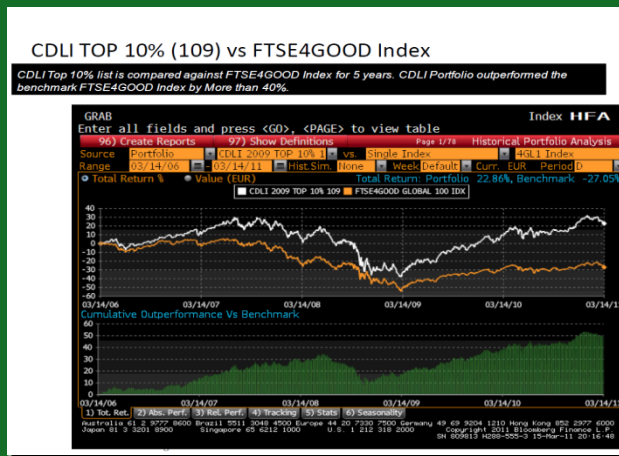
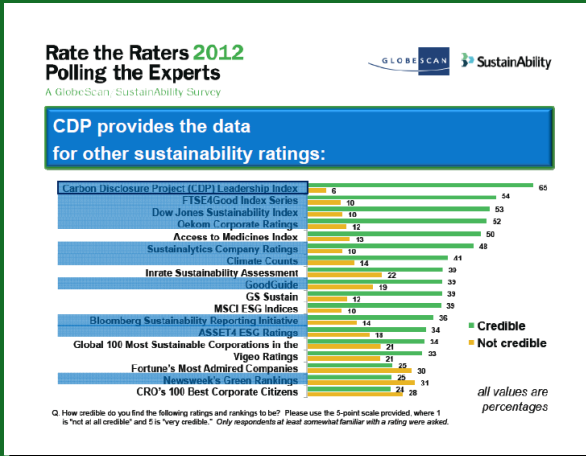
1. Royal Philips (winner)
- Akzo Nobel
3. Royal KPN
- Achmea
- 5. Royal BAM Group**
- DSM
- NS
8. Beelen Groep
9. Havenbedrijf Rotterdam
10. Heineken

1. Royal Philips
- 2. Royal BAM Group**
3. Heineken
- KPN
5. Akzo Nobel
6. DSM
7. Reed Elsevier
8. ING
9. Achmea
10. NS

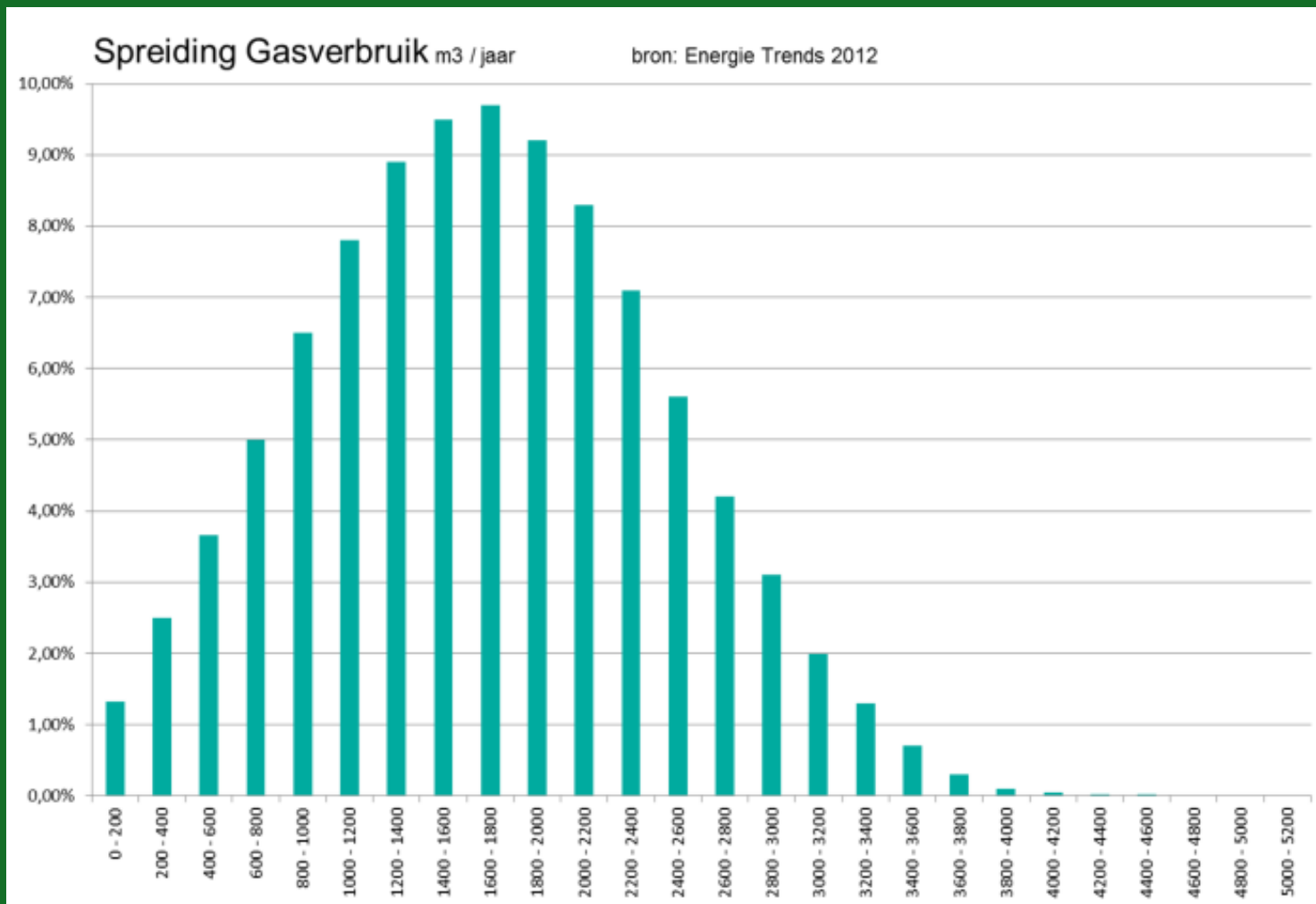
FOKKE & SUKKE DOEN AAN MVO



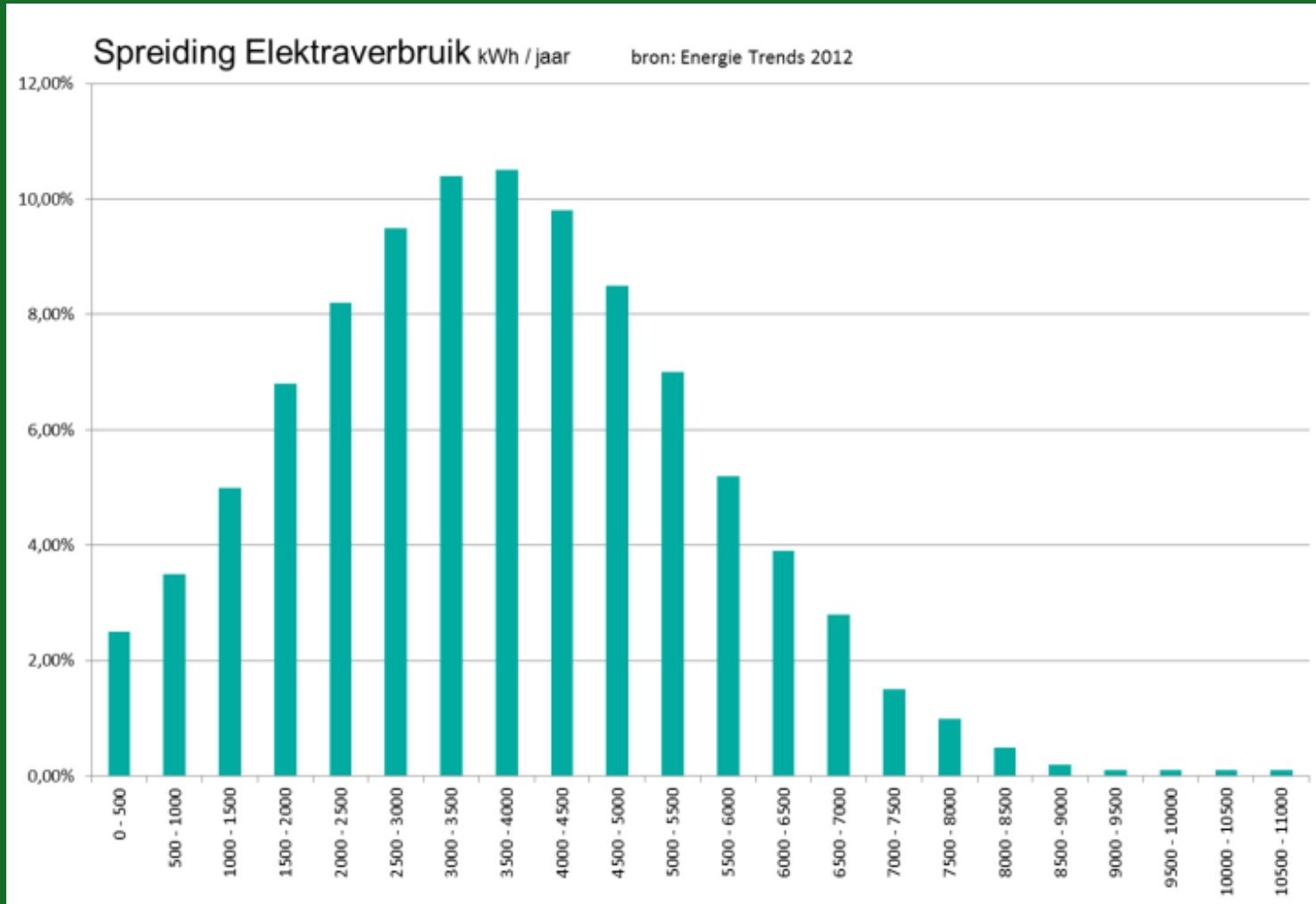
Why CDP ?



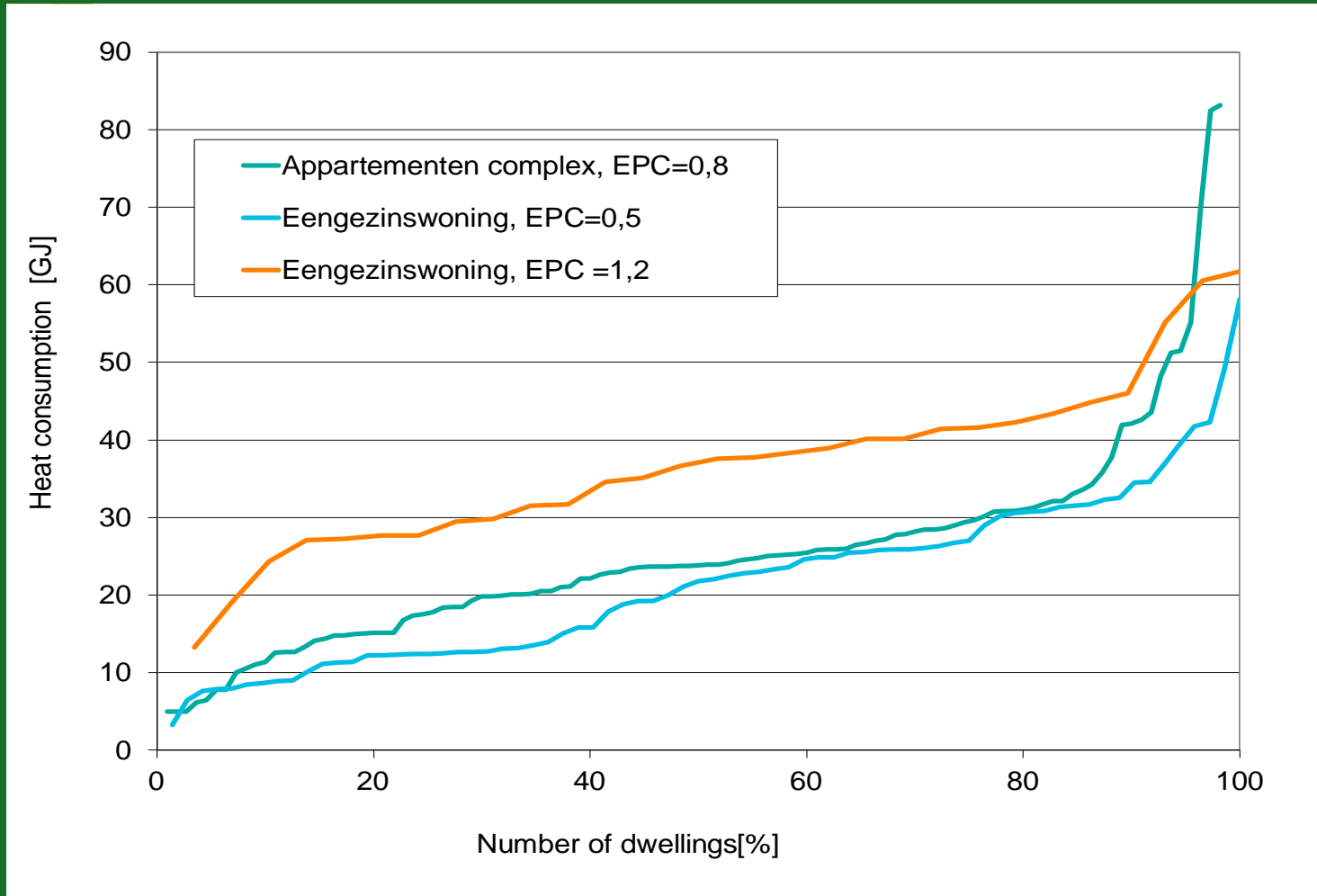
Distribution gas consumption on national scale *Source: Energietrends 2012*



Distribution electricity consumption on national scale *Source: Energietrends 2012*



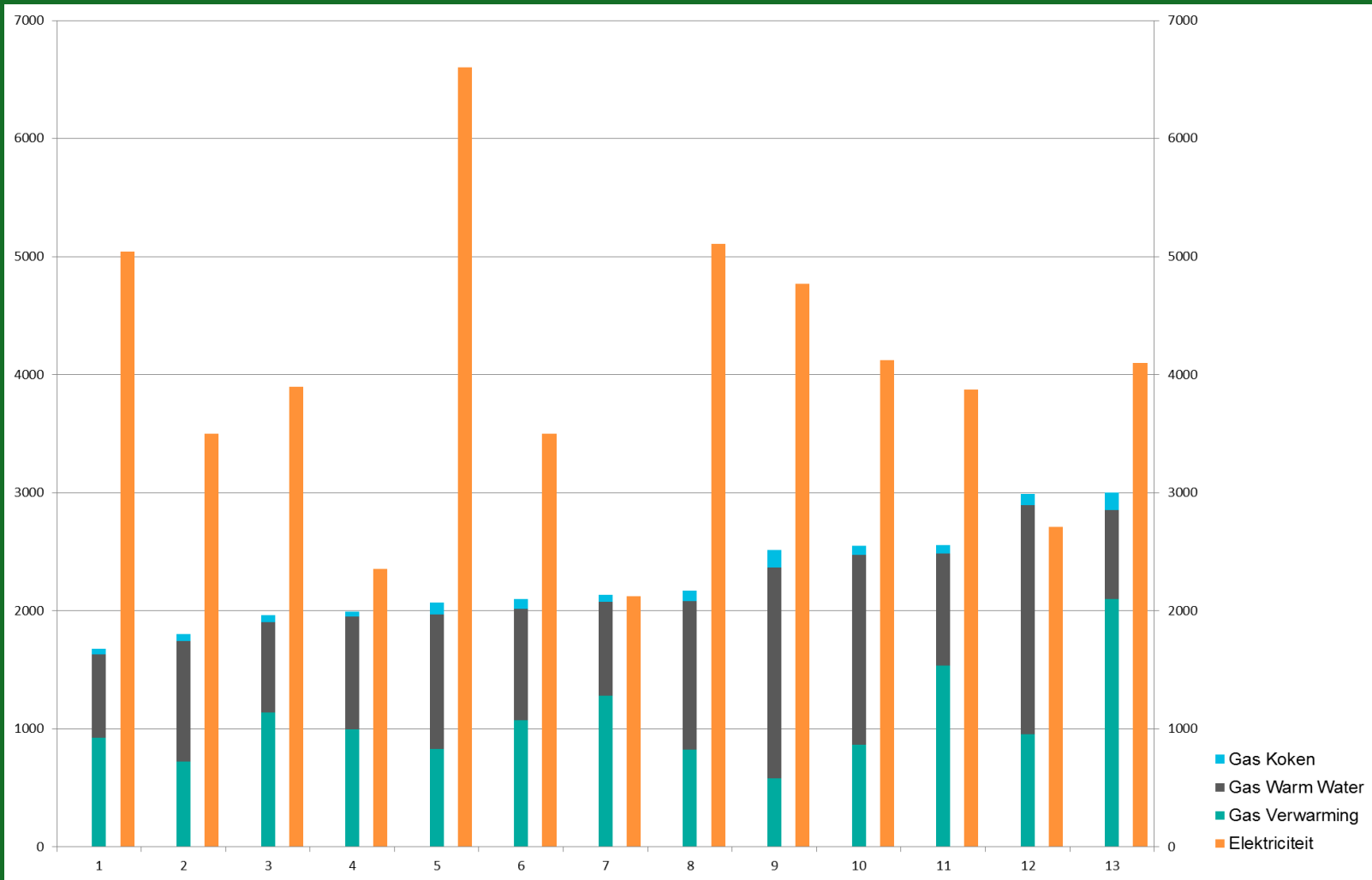
Distribution heat consumption on project scale *Source: BAM*



Energy cost distribution on project scale *Source: BAM*

| bewoners profiel | aantal | percentage | energienota | energienota | inkomsten SPV |
|---------------------|----------------------|------------|-------------|---------------|---------------|
| | bewoners | | per maand | ex. vastrecht | per maand |
| 1 | 6 | 3% | € 103 | € 81 | € 486 |
| 2 | 17 | 9% | € 130 | € 108 | € 1.836 |
| 3 | 28 | 15% | € 156 | € 134 | € 3.752 |
| 4 | 39 | 21% | € 183 | € 161 | € 6.279 |
| 5 | 36 | 19% | € 210 | € 188 | € 6.768 |
| 6 | 30 | 16% | € 234 | € 212 | € 6.360 |
| 7 | 19 | 10% | € 258 | € 236 | € 4.484 |
| 8 | 9 | 5% | € 283 | € 261 | € 2.349 |
| 9 | 4 | 2% | € 307 | € 285 | € 1.140 |
| | 188 | 100% | | | € 33.473 |
| | Gemiddeld per woning | | € 200 | | € 178 |

Energy distribution on project scale *Source: Gebieden Energie Neutraal*



Preliminary conclusions:

1. *People use energy, not buildings*
2. *Energy cost are approaching rental cost*
3. *We, the Dutch households, burn 13 Billion Euro every year*

Paradigm

1. *Current innovation provides the opportunity to go energy neutral*
2. *The construction industry can compete with the energy companies*
3. *We can invest 13 Billion Euro per year in construction*

Work shop

1. *Who should provide equity?*
2. *Which cash flow model should be used?*
3. *How to involve the current XS and the current XL consumers?*

Success!