

Rotterdam School of Management
Erasmus University

International **Full-time MBA Class of 2021**

Employment Report





Insights from the director

- Insights from the director** 3
- Graduating class profile** 4
- Career outcomes** 6
- Salaries** 8
- Recruitment at RSM** 10



Design: Kris Kras context, content and design
Photography: Robin Utrecht, Hannah Anthonyz

In front of you is the most recent employment report of the International Full-time MBA Class of 2021 from Rotterdam School of Management, Erasmus University (RSM), produced by our Career Centre.

This report provides information about the result of the job search by RSM MBA Graduates, who have studied during the Covid-19 pandemic. The RSM Career Centre team has worked intensively with the students to upgrade their management capabilities and expand knowledge of their personality, values and drivers, enabling them to take charge of their career journey in the challenging business environment of these increasingly digital world!

These MBA students have been supported during their study with small group work, peer feedback and individual coaching. All to enable them to progress their career development. The Covid pandemic enforced the students to be flexible and adaptable to many unforeseen situations and moved their job search process to mostly online activities.

Luckily the job market improved during the year, after a short, abrupt freeze in 2020. When these students entered the job market in the beginning of 2021, most of them have been able to secure a new professional career path.

As you will see in our report, completing an MBA at RSM can be a "jumping-off point" for MBA graduates – as they take their skill-set, experience, as well as their hard-won MBA knowledge, to new industries and different kinds of organisations, often changing not only location, but also functional area and/or industry.

If you are interested in recruiting talented, highly skilled and enormously motivated graduates, please connect with the RSM Career Centre team to discuss which events would suit your organisation. We will help you find the best way to meet & match with our top-level MBA talents. You will be able to find information on rsm.nl/companies or contact the RSM Career Centre via mbacareers@rsm.nl

The RSM MBA graduates have all what's needed to be "a force for positive change!"

Warm Regards,

Joep Elemans
Director, RSM MBA Career Centre

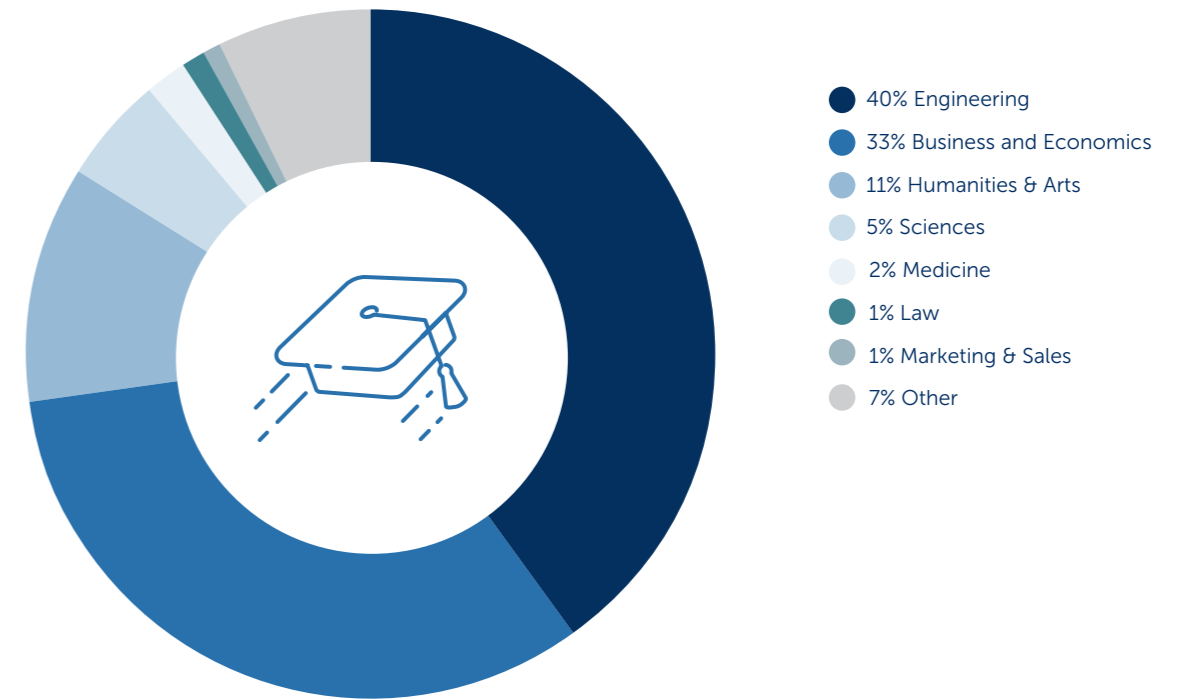
Graduating class profile

At an impressive 99 per cent international cohort and representing 40 nationalities, our programme always ranks highly in both internationalisation and global experience. Our students enjoy the capability to learn from diverse viewpoints, experiences and ideas. Future employers find this in-class experience very attractive as they continue to seek candidates who are ready to operate in multi-cultural teams around the globe.

MBA graduates class profile 2021



Educational background



Overview of Nationalities

- | | | |
|------------|--------------------|--------------------------|
| Argentina | India | South Africa |
| Australia | Indonesia | South Korea |
| Brazil | Italy | Taiwan |
| Canada | Japan | Tanzania |
| Chile | Lebanon | Thailand |
| China | Mexico | Tunisia |
| Colombia | Myanmar | Turkey |
| Costa Rica | Netherlands | United Kingdom |
| Egypt | Pakistan | United States of America |
| France | Peru | Vietnam |
| Germany | Philippines | Zambia |
| Ghana | Poland | Zimbabwe |
| Greece | Russian Federation | |
| Hong Kong | Saudi Arabia | |

Career outcomes

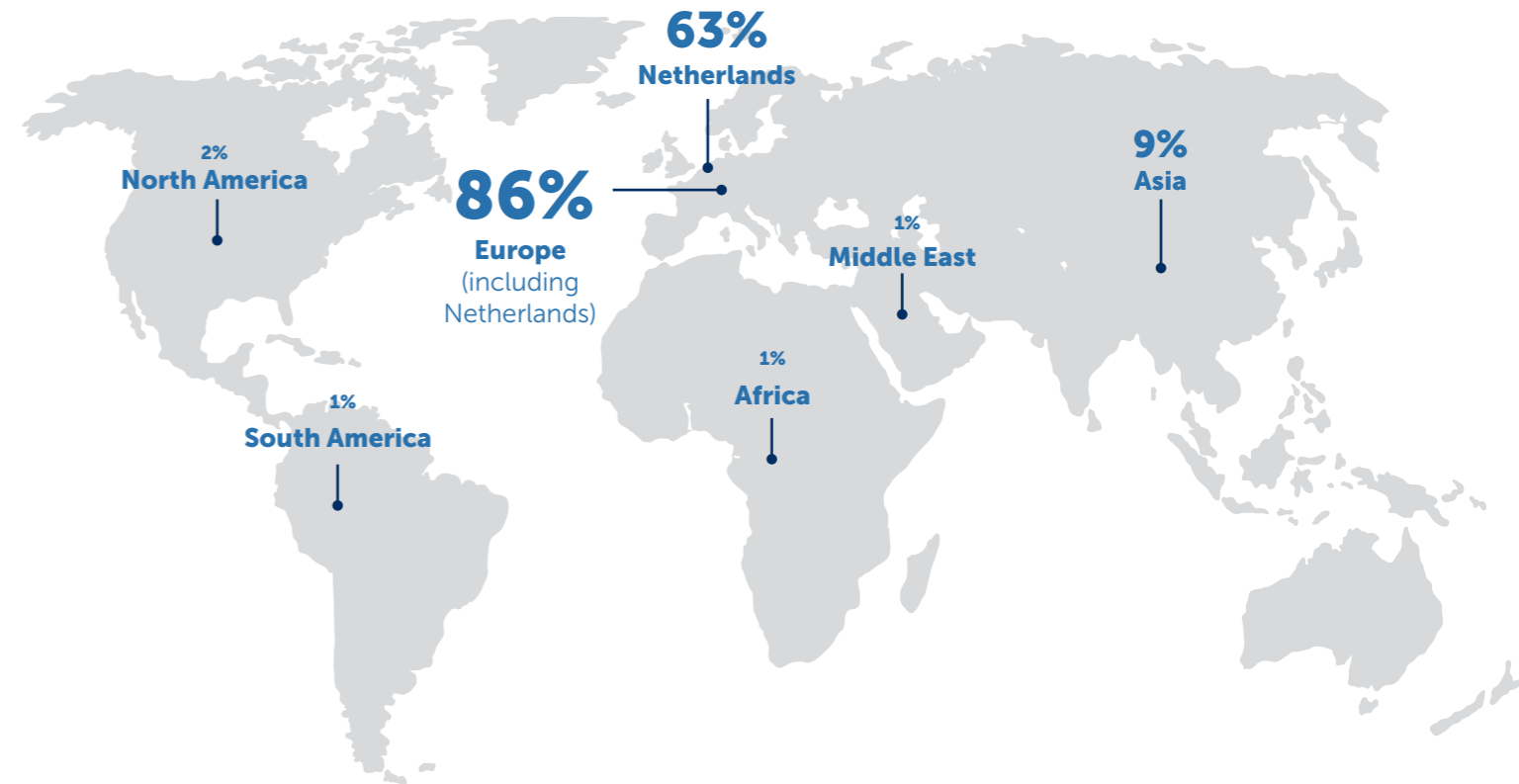
A wide range of international companies recruit graduates of RSM, from a broad range of Industries. The retail sector is the absolute number one, driven by the rapid growth of online sales and deliveries, which is an effect of the changing consumer behaviour due to the Covid pandemic. A new sector which is onboarding many of our MBA talent is the Fin Tech industry.

About 60% of the employed students landed a job in the Netherlands and more than 80% found employment in the EU – including the UK. Amazon is the number 1 hiring organisation, but of course there are also Dutch multinationals like Philips, Unilever, Ahold and AkzoNobel. However, as you can see in this report, the list of hiring companies is long and diverse, from multinational towards start-up.

The RSM Career Centre partners with numerous corporate recruiters and companies, often represented by our highly valued alumni to create a wide range of career opportunities. RSM continues to be one of the strongest business schools in terms of career opportunities for international students proceeding a career in Europe.



Found jobs in...

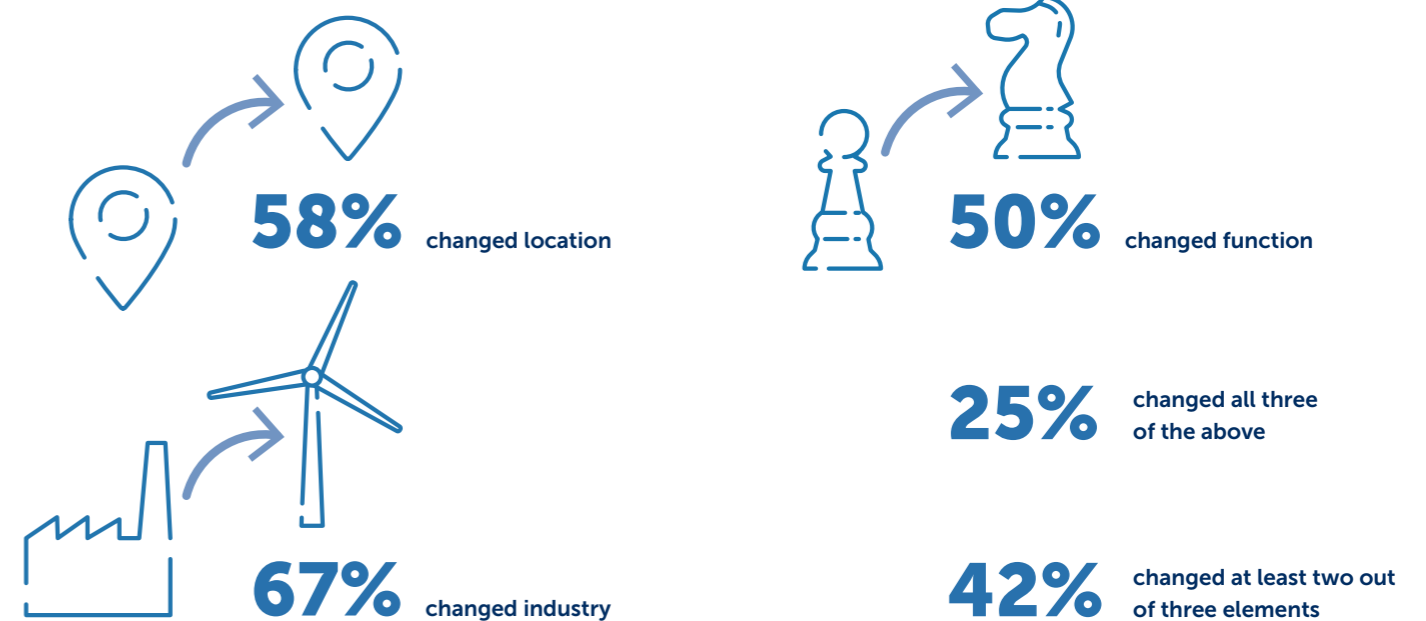


45%

» Accepted a job offer by graduation

84%

» Found a job within 3 months after graduation



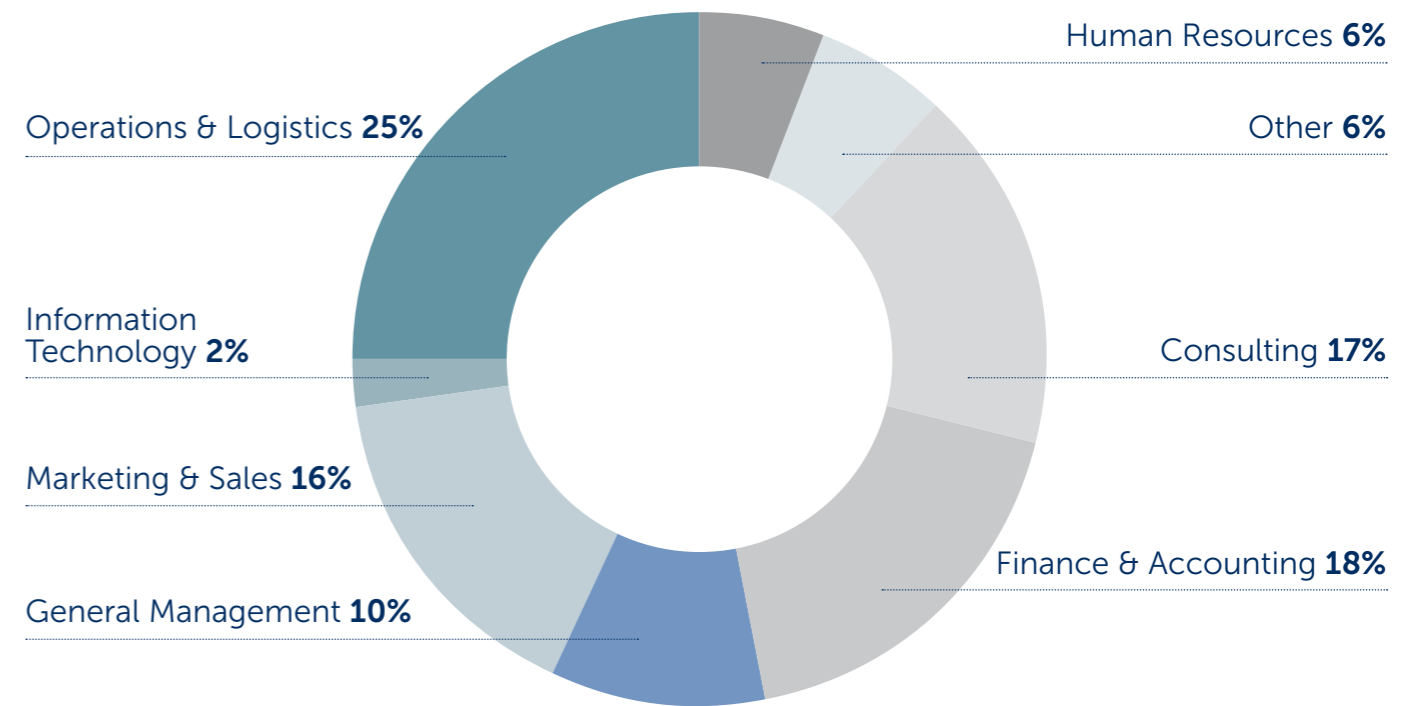
Salaries

Starting salaries for MBA graduates secure a good living standard in Europe with diversity based on work experience and influenced by location. Finance/FinTech centres are as always offering well paid jobs, however the mean of salaries has a relative small span.

MBA Graduate programmes like the Amazon Pathway career trek are offering excellent career growth opportunities, with attractive salaries for those who fit these highly challenging development programmes.

The RSM career centre teams works closely together with each individual candidate to advise and guide them through the job search journey, from the exploration & networking phase, into the interview process towards salary negotiations. Most important is the individual match to the best suitable job where the RSM MBA graduate can have the desired impact to be "a force for positive change".

MBA graduate acceptances by function



"I am more than thankful for the countless hours that RSM forced me to hold up a mirror and reflect on my life's purpose. The finest discovery in the whole process was that we had full access to an incredibly supportive network at RSM, which became a prime catalyst to many successful job placements that I know of. It is with no doubt that the spirit of collaboration, which is truly a unique RSM trait, holds more value than we give it credit for and continues to be felt long past any date of graduation."

Kristine Claire Hernandez, Full-time MBA Class of 2020
Supply Chain Strategies Project Lead at Unilever



Function	Average	Max
Consulting	\$ 84,246	\$ 112,100
Finance & Accounting	\$ 77,716	\$ 112,100
General Management	\$ 79,447	\$ 110,400
Human Resources	\$ 84,921	\$ 100,360
Marketing & Sales	\$ 72,861	\$ 131,100
Operations/Logistics	\$ 80,230	\$ 110,400
Other	\$ 76,495	\$ 100,300

Average salary \$ 78,280

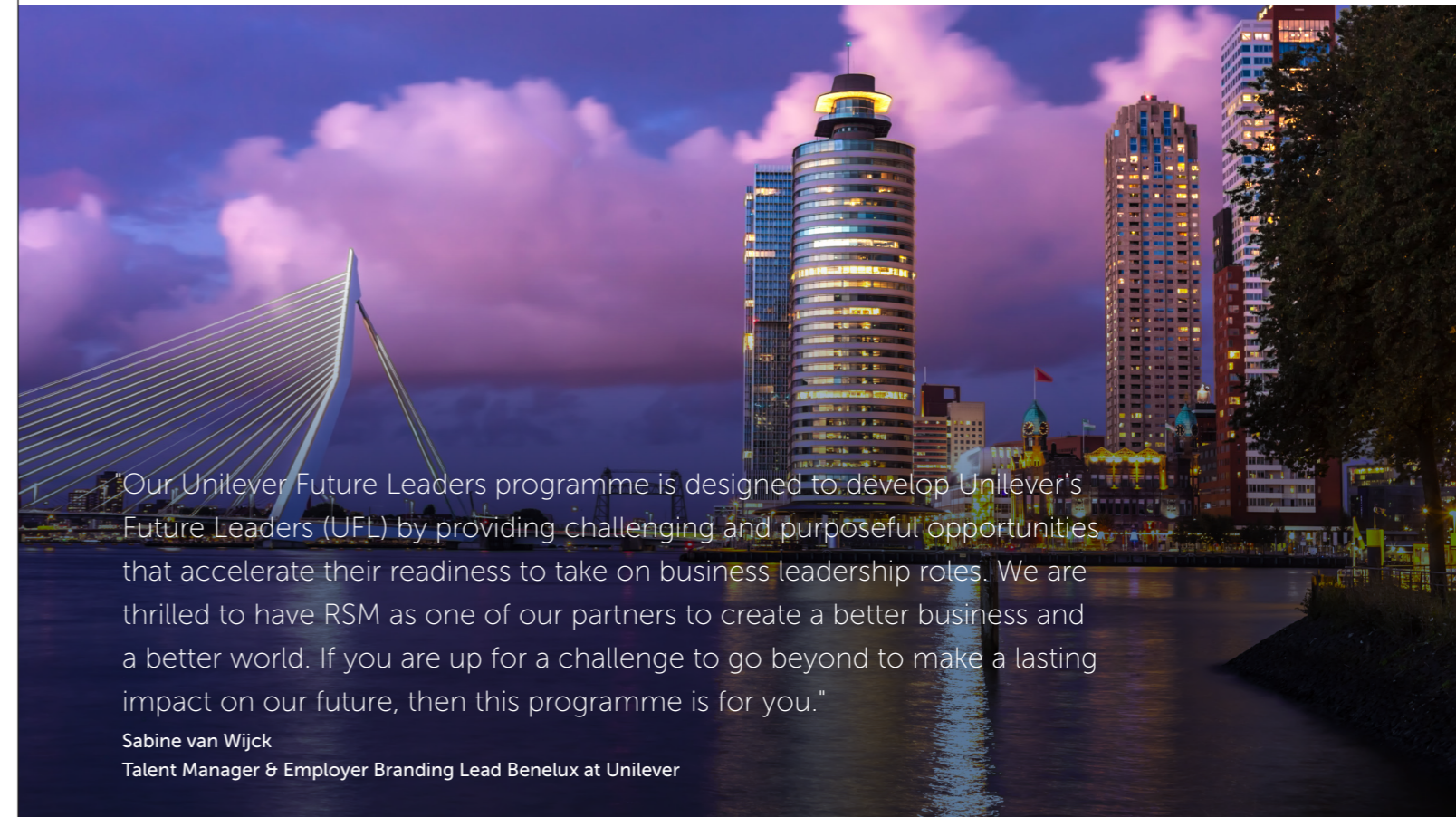


Recruitment at RSM

Every year we attract some of the world's top companies who are interested bringing our talented graduates into their organisations. From Amazon, Google, KPMG to Dutch multinationals like Philips, Unilever and Shell, our goal is to connect top companies with top graduates. Through company presentations, recruitment events and networking opportunities, we provide many options for companies, students and graduates to meet and learn more about each other.

In addition to assisting students in their post-MBA job search, we also partner with companies by identifying the talent required to fill key roles within the organisation. Our approach utilises many tactics including CV books, industry panels, interviews and job posting boards.

By working with both students and companies, our team is perfectly positioned to guide RSM MBA talents in their career search and application process.



"Our Unilever Future Leaders programme is designed to develop Unilever's Future Leaders (UFL) by providing challenging and purposeful opportunities that accelerate their readiness to take on business leadership roles. We are thrilled to have RSM as one of our partners to create a better business and a better world. If you are up for a challenge to go beyond to make a lasting impact on our future, then this programme is for you."

Sabine van Wijck
Talent Manager & Employer Branding Lead Benelux at Unilever

Corporate Involvement 2021 - Hiring companies include:

Agoda	HelloFresh	Rockwell Automation
Ahold	Hikvision	RoviSys
Amazon	Instruqt	Samsung Electronics
ASML	Irdeto	Sendcloud
Backbase	Jacob Douwe Egberts	Shell
Bestseller	Johnson & Johnson	SHV Energy
Bunge	Magnus Red	Signify
Bunge Loders Croklaan	Mambu	SumUp
Cornelder Holding B.V.	Nike	Sustainalytics
Crocs Europe	NN Group	Thor Industries
Damen Group	Olyx	Uber
Deloitte	Pharmerit	Unilever
DSM	Phillips	United States Department of State
FMO	Procter & Gamble	Wavin
FrieslandCampina	PVH	Zalando
Green Giraffe	Recharge.com	
GRI-Alleset	Robeco	

Corporate Involvement 2021 - Participating companies include:

AkzoNobel	Infinity	Salesforce
Amgen	Infosys Consulting	Schuberg Philis
Amazon	Institute for Applied Motions	Special Purpose Projects
Amazon Web Services	INVE	Unilever
Backbase	Kraft Heinz	UPS
BASF	LaNubia	Wavin
BitPay	Mendix	weGrow
Cargill	Michael Page	Weku
Deloitte	Microsoft	World Bank
Deutsche Börse	Mosa	
FiSer Consulting	MS Amlin	
FrieslandCampina	Netafim	
Global Capital Finance	Orbia	
Google	Original Beans	
HelloFresh	Paztir	
Hoppinger	Philips	
Igenico	ReliaSol	

**Rotterdam School of Management
Erasmus University**

Burgemeester Oudlaan 50
3062 PA Rotterdam
The Netherlands

 [rsm.nl/mba](https://www.rsm.nl/mba)

© 2022 Rotterdam School of Management, Erasmus University. The information in this publication is correct as of December 2021, but RSM reserves the right to make changes affecting policies, fees, curricula, or any other matter announced in this publication without further notice. No part of this publication may be reproduced, stored in a retrieval system, or transmitted in any form by any means, electronic, mechanical, photocopying, recording or otherwise without written permission from RSM.

Accredited by

