

Welcome, new RSM Master Students!

Master Kick-off Event, Wednesday 26, August 2020 | Professor Ansgar Richter, Dean of RSM & Dr Gabi Helfert, Executive Director MSc Programmes



Today's Programme

11:30 – 12:15

- Welcome by Professor Ansgar Richter, Dean of RSM and Dr Gabi Helfert, Executive Director MSc Programmes

12:30 – 15:20 (sessions start each full and each half hour)

- Virtual fair: log into moderated zoom sessions to meet student advisors, educational service teams, study associations and clubs and ask your questions

15:30 – 17:00

- Meet with other students across the programmes in our unmoderated breakout rooms

MSc Academic Directors and Programme Managers

Academic Directors



Ranoe Changur



Dr Steve Kennedy

Global Business & Sustainability



Dr Rebecca Hewett

Human Resource Management



Dr Bas Koene

Organisational Change & Consulting



Dr Dimitrios Tsekouras

Business Information Management



Dr Murat Tarakci

Management of Innovation



Dr Niels Agatz

Supply Chain Management



Eilén Clares Escalante



Prof Mathijs van Dijk

Finance & Investments



Dr Bram van den Bergh

Marketing Management



Dr Marc Baaij

Strategic Management



Dr Luca Berchicci (acting AD)

Strategic Entrepreneurship



Yide Gao



Dr Irma Bogenrieder

Master in Management



Dr Stephan Kramer

Accounting & Financial Management



Dr Robert Rooderkerk

Business Analytics & Management



Lia Hof



Dr Raymond van Wijk

Part-time Master in Management (Dutch)



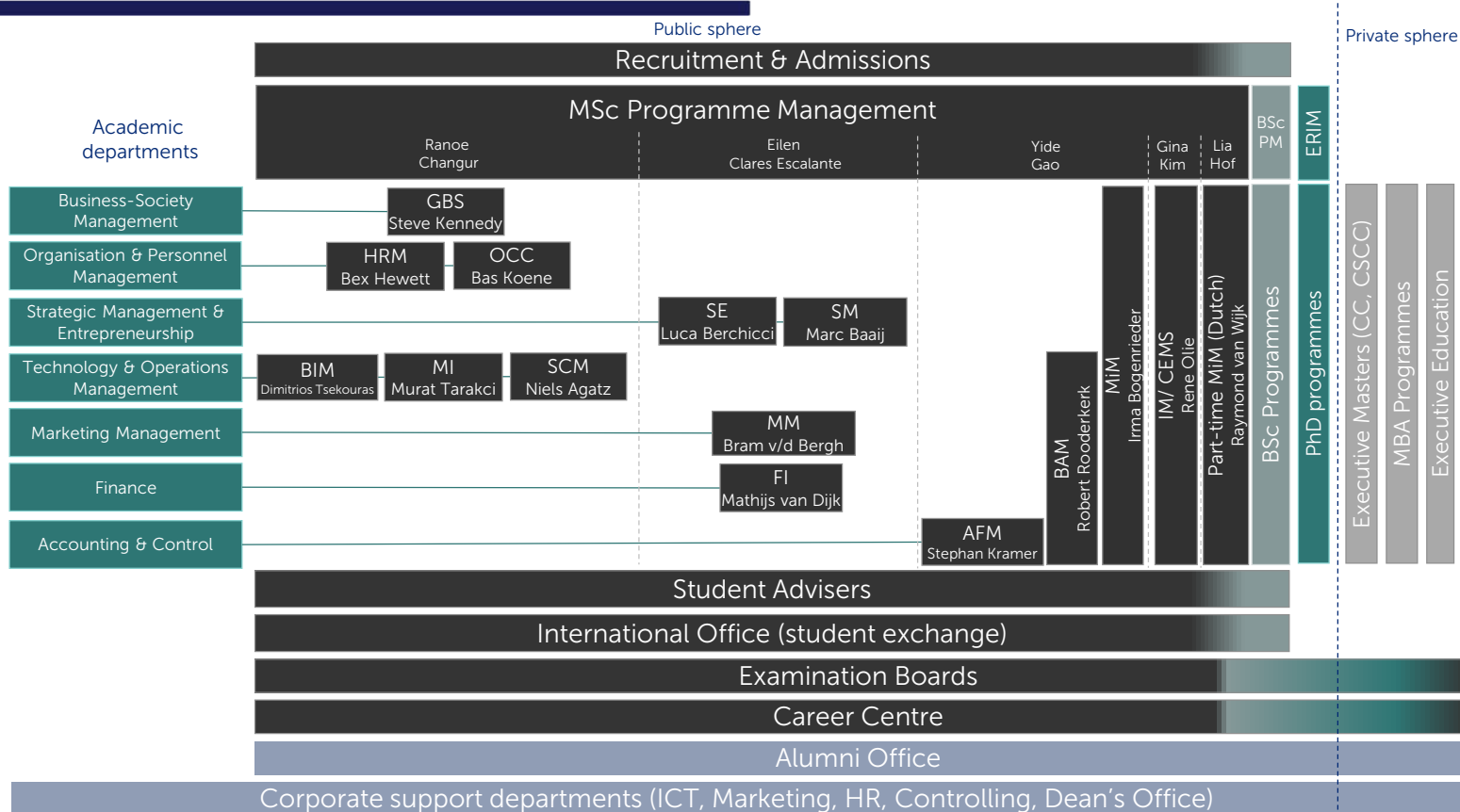
Gina Kim



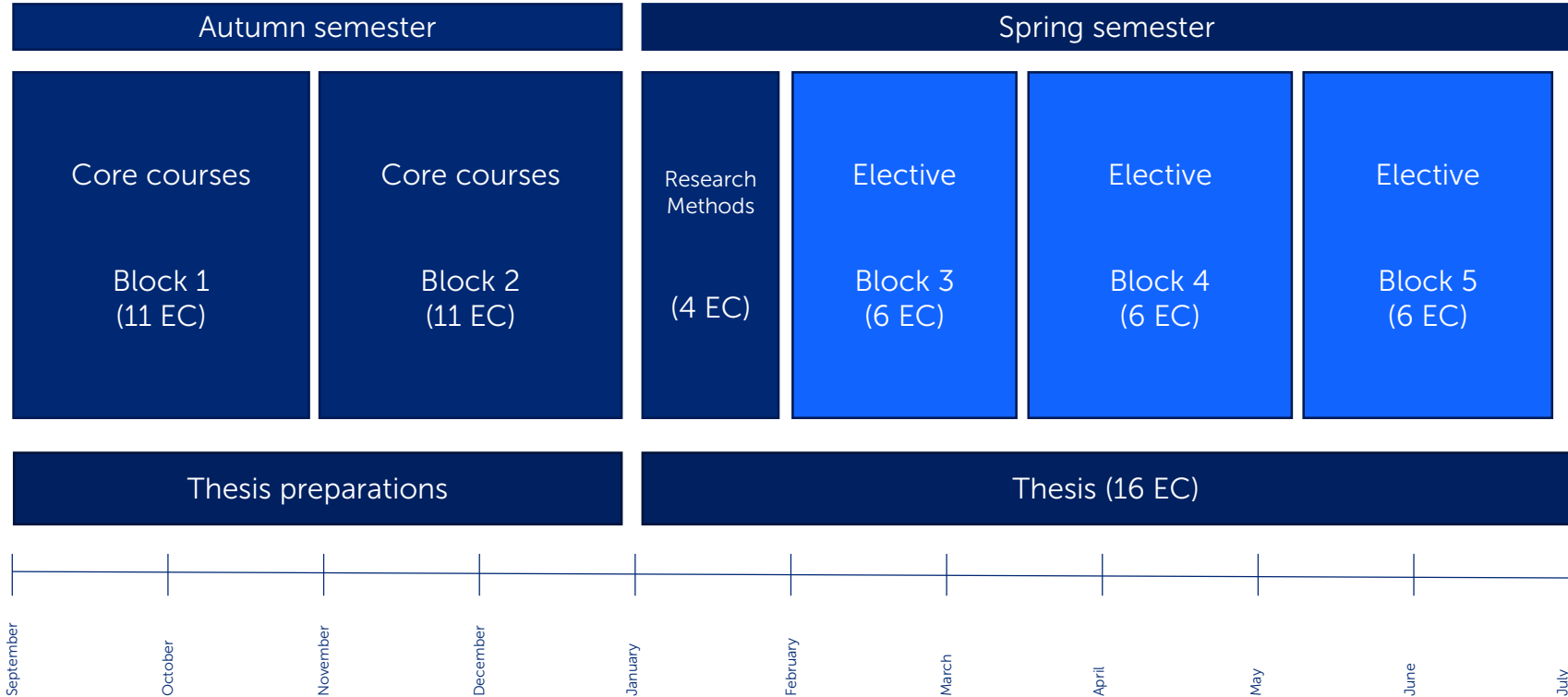
Dr Rene Olie

International Management/CEMS

Matrix Organisation



The master year in a nutshell



The Netherlands & Rotterdam during COVID-19 outbreak

- 1.5 metre distance at all times (unless members of the same household)
- Avoid busy places and travel outside peak hours if possible
- Public Transportation (trains, buses, trams and metros): face mask mandatory
 - Disposable face masks available at larger train stations or in drugstores
 - Washable cloth masks for sale at Kruidvat, HEMA, and other shops
- Reservations and registrations and health check when entering cafes, theaters, museums etc.
- Wash your hands before you go out, when you return home, after blowing your nose, before meals and after using the toilet.
- Avoid touching your face outside your home
- Cough and sneeze into your elbow
- Don't shake hands
- If you have symptoms, get tested (it's free – call 0800 1202) and stay home
- Dutch Government website for more information: <https://www.government.nl/topics/coronavirus-covid-19/tackling-new-coronavirus-in-the-netherlands>
- Dutch National Institute for Public Health: <https://www.rivm.nl/en/novel-coronavirus-covid-19>
- Also keep up-to-date via <https://www.eur.nl/corona>

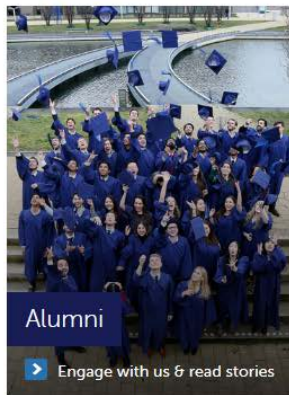
Don't miss your programme kick-off!

- Accounting & Financial Management Wednesday 2 September 2020
- Business Analytics & Management Tuesday 25, August 2020
- Business Information Management Friday 28 August 2020
- Finance & Investments Tuesday 1 September 2020
- Global Business & Sustainability Friday 28 August 2020 – Friday 4 September 2020
- Human Resource Management Monday 31 August & Thursday 3 September 2020
- Management of Innovation Monday 31 August
- Marketing Management Friday 28 August 2020
- Master in Management Friday 28 August 2020
- Organisational Change & Consulting Friday 28 August 2020
- Part-time Master in Management (NL) Friday 4 September 2020
- Supply Chain Management Monday 31 August 2020 - Wednesday 2 September 2020
- Strategic Entrepreneurship Monday 31 August & Wednesday 2 September 2020
- Strategic Management Monday 31 August 2020

- Our mission
- Student participation
- Cheating and plagiarism
- Be mindful of the environment (also on campus)
- Useful links for new arrivals

How we contribute

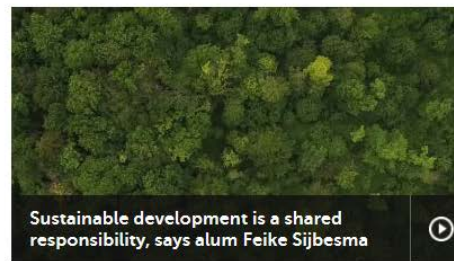
The entire RSM community contributes to positive change in some way. This is how our research, education and engagement with the wider business community actually influences and creates impact. Read on to discover inspiring examples that stem from our role in developing thought leaders in business, research and education.



[Home](#) > [Positive Change](#) > Our Positive Changes

Watch RSM's full SDG video series

By professors, students, & practitioners



SDG Masterclasses

Exchange ideas at SDG Insights

MSc Programme Committee (PC)

- Advises the Dean and the Dean of Degree Programmes
- Advises on and approves changes in the Teaching & Examination Regulations
- One academic staff member and one student per programme (26 members in total)
- More information: <https://www.rsm.nl/rsm-programme-committees/msc-programme-committee/>
- Interested in representing your programme? Contact your Academic Director and MSc PC secretary Annelie van der Leelie (vanderleelie@rsm.nl) as soon as possible!



Programme Advisory Committees (13x)

- Established by the student member of the Programme Committee
- 3-4 members per programme who advise the Academic Directors
- Contact your Academic Director if you want to join!



Faculty Council

- Represents the general interests of the RSM community and advises the Dean
- Representatives for academic staff (2 representatives), administrative staff (one representative), PhD candidate (2 representatives) and students (5 representatives).
- Elections always in March of the previous academic year
- More information: <https://www.rsm.nl/faculty-council/home/>

- After each block - for each course in the block
- After the thesis for the thesis trajectory
- At the end of the programme for the whole programme
- Structured survey plus comment fields
- Used regularly in review meetings with Academic Directors and instructors for continuous improvement – please participate!
- We need your comments, but make them constructive.
- Anonymous, but: **please be respectful!**

Policy & Rules – Cheating and Plagiarism

Cheating and Plagiarism: <https://www.eur.nl/en/about-eur/policy-and-finance/cheating-and-plagiarism>



https://www.youtube.com/watch?v=kwSZze_mDy4&feature=youtu.be

Be mindful of your environment (on campus)

- Smoking is prohibited on campus
- Avoid waste. Use reusable bottles and tableware on campus.
- Waste recycling: Where provided recycle your plastic and paper waste separately.
- Park your bike in an official bike stand – respect the blind and handicapped!

There's a large indoor bike parking on the ground floor of Mandeville: enter through the parking garage!



Guide for sustainable living:

<https://www.rsm.nl/sustainability/sustainable-rsm/sustainable-living/>

Useful links for new arrivals



On Rotterdam

Rotterdam Municipality: <https://www.rotterdam.nl/english/>

Public Transport Rotterdam: <https://www.ret.nl/en/>

Culture in Rotterdam: <http://www.uitagendarotterdam.nl/> (in Dutch only)

Festivals in Rotterdam: <https://www.rotterdamfestivals.nl/en/>

Commodity Market Rotterdam: <https://www.facebook.com/groups/commoditymarketrotterdam/>

On Erasmus University Rotterdam

Website EUR: <https://www.eur.nl/en>

On the Netherlands

The Netherlands Board of Tourism: <http://www.holland.com/global/tourism.htm>

Study in the Netherlands: <https://www.studyinholland.nl/>

Lonely Planet: <https://www.lonelyplanet.com/the-netherlands>

Nuffic: <https://www.nuffic.nl/en>

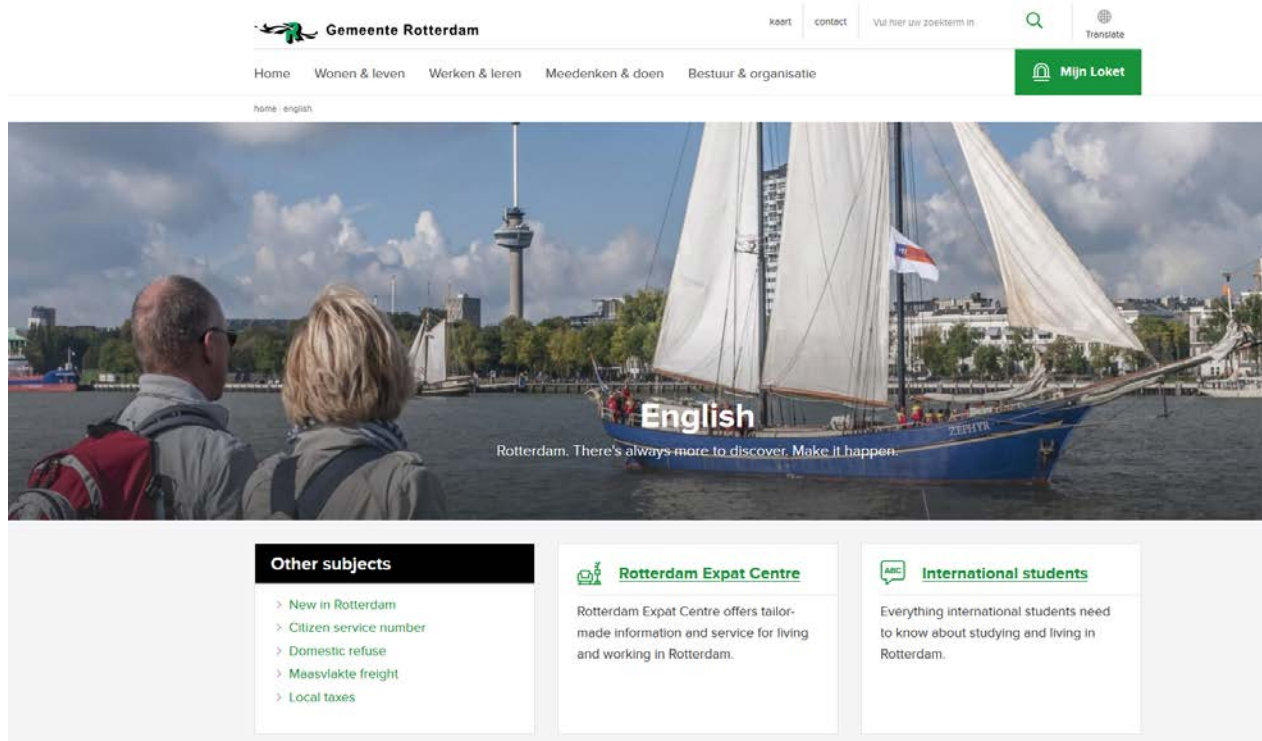
Schiphol Airport: <https://www.schiphol.nl/en/>

Dutch Railways: <http://www.ns.nl/en>

King's Day: <https://en.wikipedia.org/wiki/Koningsdag>

ISIC/OV-chipkaart: <https://www.isic.nl/en/public-transport> (for Int'l students only)

Rotterdam for new arrivals



The screenshot shows the homepage of Gemeente Rotterdam. At the top left is the logo and name 'Gemeente Rotterdam'. To the right are links for 'kaart', 'contact', and a search bar with the text 'Vul hier uw zoekterm in'. Further right are icons for a search function and a 'Translate' button. Below this is a horizontal navigation menu with links for 'Home', 'Wonen & leven', 'Werken & leren', 'Meedenken & doen', and 'Bestuur & organisatie'. A green button labeled 'Mijn Loket' is positioned on the right side of this menu. Below the navigation is a language selector showing 'home' and 'english'. The main banner features a photograph of a blue sailboat named 'ZEPHYR' on the water, with the word 'English' overlaid in large white letters. Below the photo, the text reads 'Rotterdam. There's always more to discover. Make it happen.' Below the banner are three content boxes. The first box is titled 'Other subjects' and contains a list of links: '> New in Rotterdam', '> Citizen service number', '> Domestic refuse', '> Maasvlakte freight', and '> Local taxes'. The second box is titled 'Rotterdam Expat Centre' and contains the text: 'Rotterdam Expat Centre offers tailor-made information and service for living and working in Rotterdam.' The third box is titled 'International students' and contains the text: 'Everything international students need to know about studying and living in Rotterdam.'

RotterdamPas

- Discount on more than **750 (!)** attractions in Rotterdam
- The RotterdamPas is only €12.50 for all full-time students who are registered as inhabitant of Rotterdam (normal price €60,-)
- Valid from March 1, 2020 until February 28, 2021
- More information: www.rotterdampas.nl (in Dutch only) or download the app

