

ROTTERDAM SCHOOL OF MANAGEMENT ERASMUS UNIVERSITY

WELCOME TO

RSM

A LIFELONG LEARNING EXPERIENCE

RSM AT A GLANCE:

- ▶ **34,000 alumni active worldwide**
- ▶ **A comprehensive portfolio of bachelor, master, MBA, PhD and executive programmes**
- ▶ **Delivers business leaders with an innovative mindset**
- ▶ **Top-class professors in RSM's globally oriented faculty**
- ▶ **A consistent ranking among Europe's top ten business schools**
- ▶ **One of 1% of schools worldwide with 'Triple Crown' accreditation**
- ▶ **150+ international partner schools**

Rotterdam School of Management, Erasmus University (RSM) is the top-ranked business school of the prestigious Erasmus University Rotterdam (EUR), which was founded in 1913.

Today, more than 100 years later, EUR is an international knowledge institute for critical thinking and academic training, driven by a strong focus on current social issues. Our students follow programmes in EUR's seven schools, which focus on three domains:

- ▶ Economics & Management
- ▶ Medicine & Health Sciences
- ▶ Law, Culture and Society

RSM is one of EUR's schools with around 6,000 bachelor and master students, 400 MBA students and 2,200 executives every year. It's one of the most internationally-orientated and most reputable business schools worldwide. It was founded in 1970 by the following Dutch companies: Shell, Philips, Unilever, AkzoNobel, Tata Steel and ABN AMRO, aiming to meet the growing need for management education. Now, there are more than 100 nationalities working and studying together on campus. RSM offers a broad portfolio of bachelor, master, MBA, doctoral and executive education programmes, offering a lifelong learning experience.

WWW.RSM.NL

RSM - a force for positive change

WELCOME TO RSM

LEADING THROUGH EDUCATION, RESEARCH, RELATIONSHIPS AND IDEAS

A growing number of multinational organisations appreciate RSM for the many opportunities the school offers them. Our wide range of **programmes for executives varying from one day to two years, high-quality recruitment services, cutting-edge research projects and progressive networking initiatives** affect the productivity and operational functioning of companies across all industries worldwide.

RSM is a **research-driven** business school and has one of the **world's largest and most-cited business school faculties**, the Erasmus Research Institute of Management (ERIM). ERIM has around 237 researchers and 112 active PhD students and is consistently ranked among the top three European research institutes.

RSM researchers showcase their latest findings and describe how they affect business in our print quarterly magazine RSM Discovery and on our **online video platform RSM Discovery**. www.rsm.nl/discovery

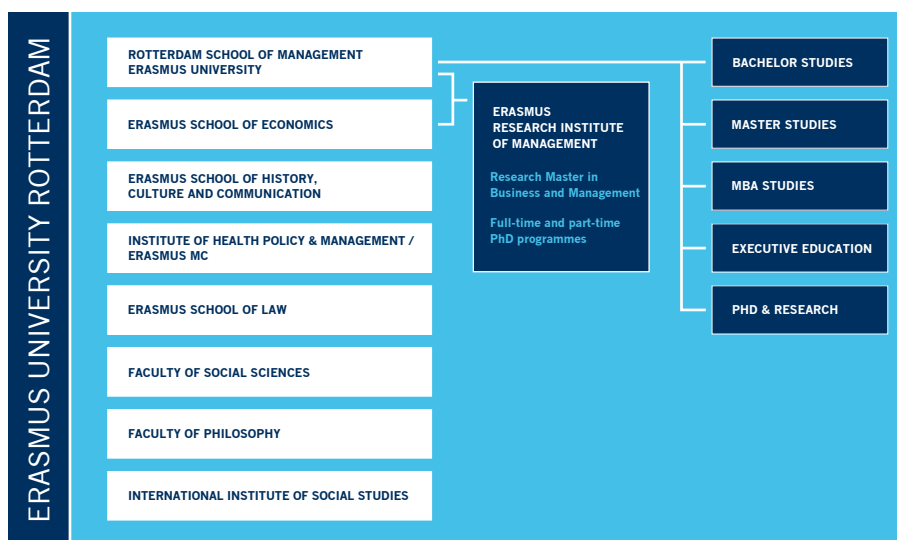
SOURCE OF IDEAS, KNOWLEDGE AND ADVICE

The RSM Advisory Board is a source of ideas, knowledge and advice for the school. The input comes from a body of high-ranking business representatives from various organisations, such as Unilever, Shell, ING, Siemens, BP and Randstad Holding. Each Advisory Board member is a distinguished and influential leader from a business or public sector, and reflects the international diversity of RSM.

They advise the school on three levels:

- ▶ overseeing that our educational programmes serve the needs of business
- ▶ ensuring that our research adds value to business practices
- ▶ guaranteeing that RSM benefits our corporate partners, students and alumni.

ORGANISATIONAL STRUCTURE



RSM ACCREDITATIONS

- ▶ Association of MBAs (AMBA), since 1996
- ▶ Association to Advance Collegiate Schools of Business (AACSB), since 1998
- ▶ European Quality Improvement System (EQUIS), since 1998
- ▶ Accreditation Organisation of the Netherlands and Flanders (NVAO) for all degree programmes, since 2007



WWW.RSM.NL

CONTACT DETAILS

Visiting address:

Rotterdam School of Management
Erasmus University
Burgemeester Oudlaan 50
3062 PA Rotterdam, The Netherlands

Postal address:

P.O. Box 1738
3000 DR Rotterdam, The Netherlands
Tel. +31 10 408 2222
Email info@rsm.nl

